

Ravenswood Family Health Center has registered over 28,000 patients since RFHC opened in 2001. We are the health home for an estimated 11,000 active patients who have access to all of our services.

**Services**

- Comprehensive primary medical care
- Health & nutrition education
- Chronic disease case management
- Full service dental care
- Behavioral health counseling
- Referrals for social services and specialty care

*In 2010, Ravenswood Family Health Center provided 50,200 health care visits to 8,869 patients.*

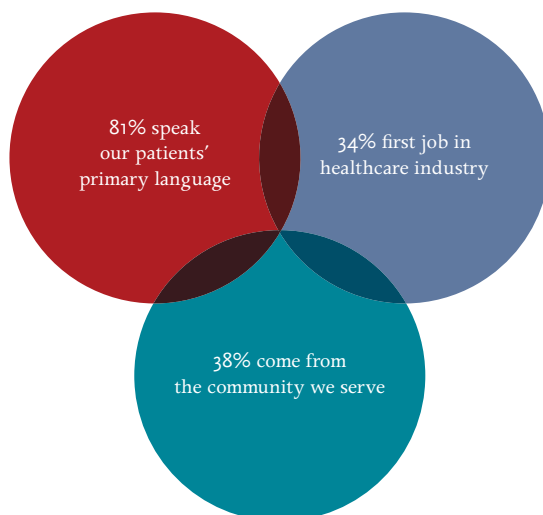
**Patient Profile**

- 89.4%** live at 100% of Federal Poverty Level – that’s \$22,350 for a family of four
- 94%** are Latino, African American, Pacific Islander
- 76%** prefer a language other than English
- 60%** are uninsured
- 39%** are pediatric patients
- 18%** of pregnant women under age of 20
- 15%** are 5 years and younger

**Services by Category**

Medical	<b>32,888</b>
Dental	<b>4,184</b>
Behavioral Health	<b>2,109</b>
Case Management	<b>3,034</b>
Patient/Community Health Education	<b>2,738</b>
Health Coverage Enrollment	<b>5,247</b>

**Ravenswood has a diverse staff of 123 employees**



We are an employer and a source for significant workforce development in an area with an unemployment rate as high as 21% (Bureau of Labor Statistics, 2010).

**Annual Operating Budget FY 2009–10: \$11 million**

Funded by Federal dollars **28%**; State/County **5%**; Patient revenues **49%**; Foundation **16%** and Donors **2%**.

*Note: In 2010, RFHC received one-time ARRA stimulus funding (\$694,400) for capital improvement & services.*

**Ravenswood Family Health Center** is a federally qualified nonprofit community health center serving uninsured, low-income residents of East Palo Alto, east Menlo Park and Redwood City. We are one of 6,600 community health centers and clinics in the nation that provide high quality primary care at significantly lower costs. Our system of care focuses resources on prevention as much as treatment.

RFHC offers same day urgent care, diverting an estimated 5,600 emergency room visits per year from local hospitals, a savings of \$2 million.

# HEALTH CARE IS A BASIC HUMAN RIGHT

*Accessible*

*Engaged*

*Enterprising*

*Innovative*

*Realistic*

*Responsive*



## Locations

### Ravenswood Family Health Center

1798 A Bay Road  
East Palo Alto, CA 94303  
650.330.7400

### Belle Haven Clinic

100 Terminal Avenue  
Menlo Park, CA 94025  
650.321.0980

### Center for Health Promotion

1805 Bay Road  
East Palo Alto, CA 94303  
Enrollment 650.330.7416

### Ravenswood Family Dentistry

1807 Bay Road  
East Palo Alto, CA 94303  
650.289.7700

## For more information

### Development Office

Aaron Lones, Development Director  
alones@ravenswoodfhc.org  
650.617.7828

[www.ravenswoodfhc.org](http://www.ravenswoodfhc.org)